



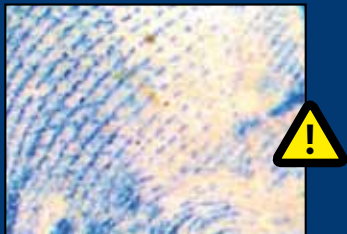
## ► REPAIRS

The pictures below shows 2 images, the bottom part shows the letter E on a stamp, on the same stamp the same letter appears however by using the compare function we can see that something is not right - the E is not clear and the white bar has a small section missing.

The ability to compare two stamps or two separate parts of the same stamp is essential when looking for engraving errors or repairs.



The picture below is taken from the back of a stamp at a high magnification. The blue area is normal the red and white area indicates that the paper has been treated or repaired, not visible with the naked eye.



## LINDNER MAGNICAM

LINDNER Magni Cam – mobile digital microscope with display and camera function all in one!

Magnification in a new dimension The mobile digital microscope offers the latest innovations which allow you to see the smallest detail – magnification anywhere at any time! Thanks to the integrated display you can inspect your objects without depending on your computer or notebook. The details can easily be seen on the display and with the help of the camera function be held and saved. Thanks to the concept of microscope, magnifier and camera all in one the MagniCam offers everything you need in one gadget, no need for a computer. The delivery includes a USB cable thus offering the possibility to save the pictures onto your PC and to see them in a large format on the screen or to edit the pictures.



Ihr LINDNER Fachhändler:

LINDNER Falzlos-Gesellschaft mbH  
 Rottweiler Straße 38 · D-72355 Schömberg  
 Telefon: +49 (0) 74 27 / 70 10  
 Fax: +49 (0) 74 27 / 61 18  
 Internet: www.lindner-original.de · E-Mail: info@lindner-original.de

Flyer 0000



# MagniCam

## Mobile digital magnifier



## QUICK START GUIDE for MagniCam VT101

Press red start button for 2 seconds

### ► DIGITAL CAMERA MODE

Adjust optical focus wheel to 7x & adjust digital focus to minimum magnification In this mode magnification ranges upto 7x is possible.

To view whole item Magnicam can be held at a distance from viewed object – adjust focus using the optical focus wheel.

Close up examination is not possible in this mode - see next section

Light settings can also be adjusted.



### ► DIGITAL MAGNIFIER MODE

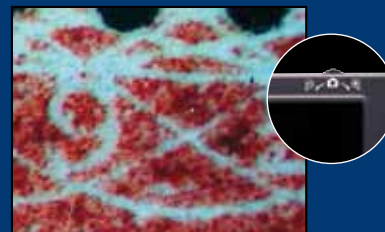
Adjust optical focus wheel anticlockwise to view detail. In this mode magnification from 7x to 25x is possible through the optical lens 7x and the digital zoom upto 25x



### ► DIGITAL MICROSCOPE MODE

Move the optical focus wheel turned fully anticlockwise.

In this mode magnification from 27x to 108x is possible by adjusting the digital focus wheel.



## LINDNER MAGNICAM

Mobile digital magnifier with display and camera function all in one! Portable unit stores up to 60 images which can be transferred to your computer. Magnification, 7-108x with additional optical zoom feature 7x - 27x **Order ref 9115**

### ► TECHNICAL SPECIFICATIONS:

**Magnification:** 7 to 108 x, optical zoom at 7 to 27 times magnification

**Operating modes:** digital microscope (27 x - 108 x); digital magnifier (7x -25 x); Digital camera (1 x - 7 x)

**Display:** 4,6 cm / 1,8"

**LCD colour display Illumination:** 4 white LEDs, 3 different levels

**Picture Effects:** levels of grey, inverted colours, separated display, accentuation, relief

**Memory:** internal flash memory to safe ca. 60 pictures (can be seen at the display of the MagniCam or via USB cable be transferred to your PC and there be seen or worked on)

**Size:** 120 x 56 x 25 mm

**Weight:** ca. 70 g (without batteries)

**Batteries:** 3 x AAA Micro battery (included in delivery) – rechargeable with the included USB cable (PC) or net plug (230V).

**Included in delivery:** LINDNER MagniCam, Mini-USB cable, net Plug/recharging cable,

3 x AAA NiMH batteries, CD with software and instructions

**Operating language for device:** English

### ► BUTTONS



Special Affects button  
Default: Normal  
Press once: Gray scale  
Press twice: Inverse  
Press three times: Emboss  
Press four times: Split Screen  
Press for 2 seconds: Ruler/Scale  
Return/Preview button

### ► SPECIAL FUNCTIONS

In normal mode press preview button to recall the saved image on the device.

In split screen mode, press recall images stored on the Magnicam. Press the centre (compare) button to view both this saved image and the current image being viewed.

Pressing the capture image button will freeze the new image alongside the previously saved image.



Within the software provided you can download and upload images to and from the Magnicam.

Combining this with the compare function you can upload images of stamps taken some time ago onto the Magnicam, and compare them to the actual stamp you are viewing.